

CHELSEA TOWNES

HOLLINGSWORTH PARK

—VERDAE—



The Kensington

3 Bedrooms • 2.5 Bathrooms • 2,323 sqft.

The Kensington at Chelsea offers maintenance free living with a highly desired master on the main level! This incredible townhome offers 2 additional bedrooms upstairs, each with walk in closets, and a loft space, which could be used as a home office, library, theatre or exercise room. The opportunities are endless! The open concept plan is excellent for gathering friends and family with a large island open to both the dining room and living room. Park behind the home in the attached 2 car garage, and enjoy the convenience and lifestyle of Hollingsworth Park at Verdae!

Hunter Hurst
(864) 423-3420
hphurst@cbcaine.com

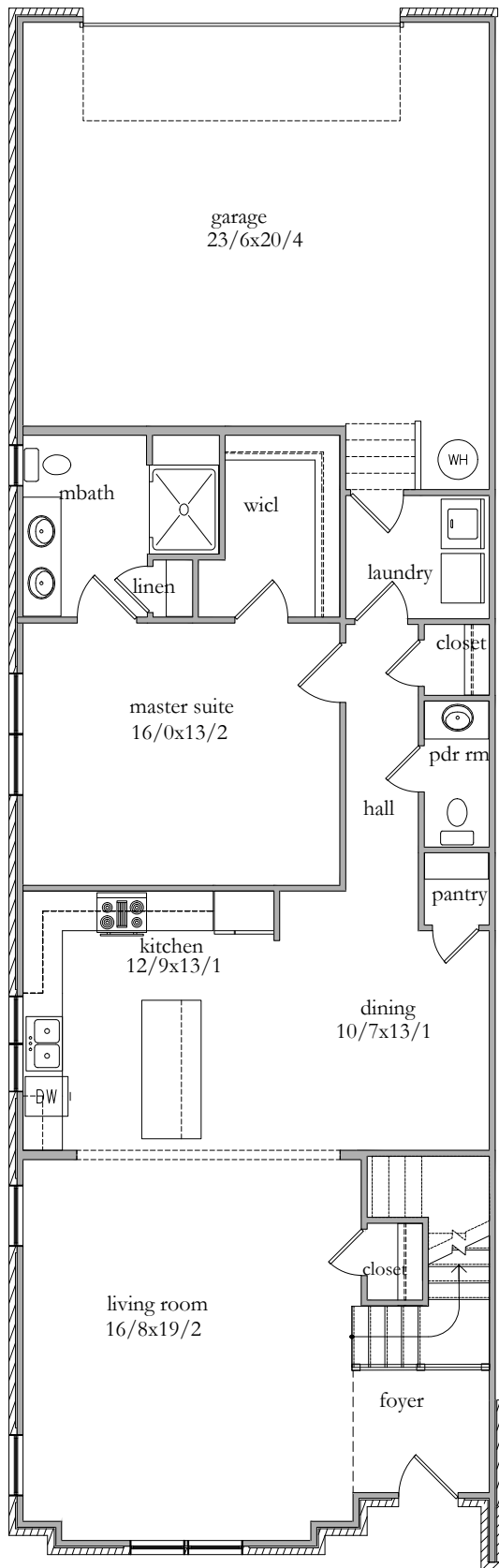
COMMUNITY FEATURES

- Legacy Park, which features 20 acres of hills and quiet wooded areas
- Proximity to Verdae's commercial tenants which include medical offices, top-rated restaurants, grocery stores, hotels, and more.
- Less than a 10-minute drive to downtown Greenville
- A close-knit, village-like atmosphere



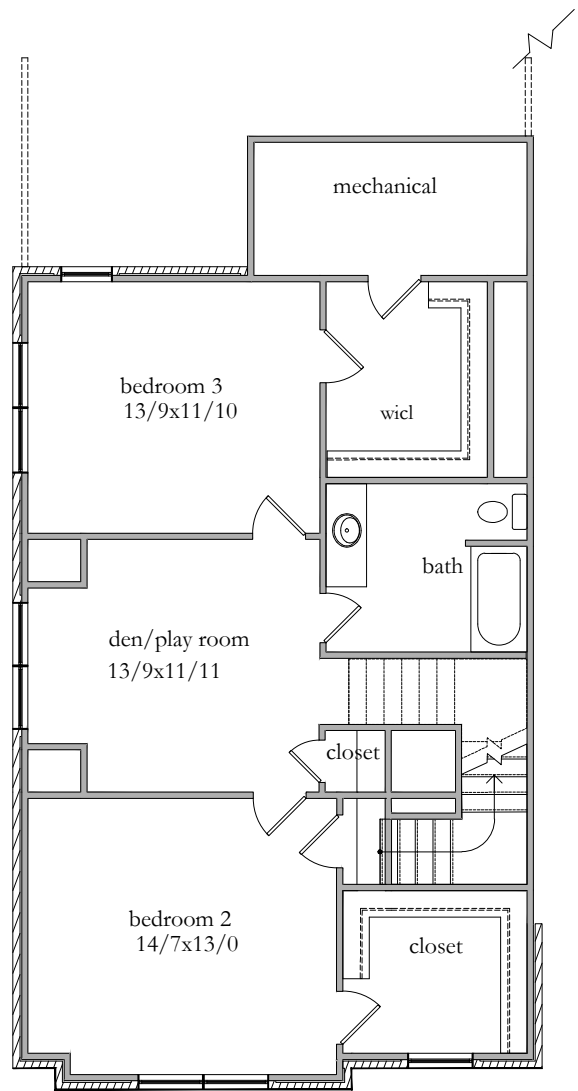
COLDWELL BANKER
CAINE

All pictures and renderings shown are for illustration purposes only. Actual product will vary.



The Kensington

3 Bedrooms • 2.5 Bathrooms



All pictures and renderings shown are for illustration purposes only. Actual product will vary.