

CHELSEA TOWNES

HOLLINGSWORTH PARK

—VERDAE—



The Sloane

3 Bedrooms • 2.5 Bathrooms • 2,035 sqft.

Welcome home to The Sloane at Chelsea! This thoughtfully designed townhome offers 3 bedrooms, and 2.5 bathrooms. The open concept living space is perfect for entertaining, with a large dining room open to both the kitchen and living room. The kitchen features an island, oversized pantry and plenty of cabinet space. The Owner's Suite is upstairs, and has 2 large closets and en suite bathroom with a linen closet. The two car garage is situated as rear entry, giving this all-brick townhome excellent curb appeal for greeting neighbors and friends.

Hunter Hurst
(864) 423-3420
hphurst@cbcaine.com

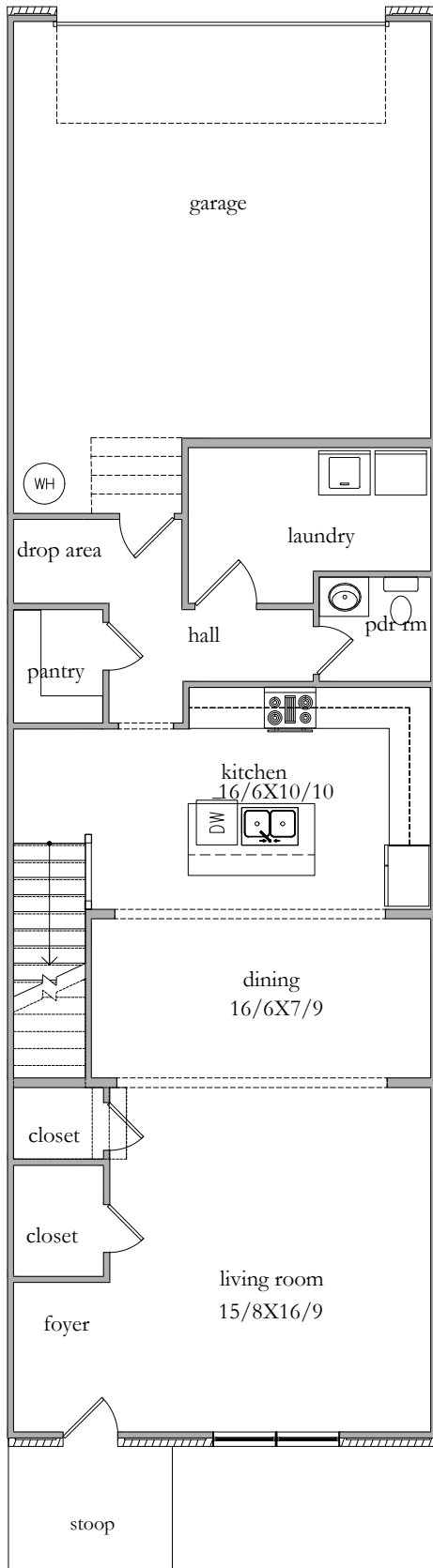
COMMUNITY FEATURES

- Legacy Park, which features 20 acres of hills and quiet wooded areas
- Proximity to Verdae's commercial tenants which include medical offices, top-rated restaurants, grocery stores, hotels, and more.
- Less than a 10-minute drive to downtown Greenville
- A close-knit, village-like atmosphere



COLDWELL BANKER
CAINE

All pictures and renderings shown are for illustration purposes only. Actual product will vary.



The Sloane

3 Bedrooms • 2.5 Bathrooms

